

Safe Kozhikode Geoportal User Manual

Safe Kozhikode is a webmap developed for **RTO Enforcement team Kozhikode**. It shows National Highways, State Highways, Major District roads, Police stations, Fire Stations, location of Electric Vehicle charging points, Black spots in various routes, jurisdiction of RTO and SRTO offices, their location and major government offices for the effective enforcement of different RTO squads in city limits as well as in rural areas of the district. It also helps the operational management of transportation in occurrence of natural calamities and relief and rescue operations during any disaster. Safe Kozhikode Geoportal is the Geospatial data visualization portal for the data related to the road safety. The Portal is made and maintained by **RTO enforcement team Kozhikode** developed by [Geominds](http://geominds.in). The portal can be viewed by logging in to <http://safekozhikode.geominds.in/>

1. Safe Kozhikode Geoportal

The geoportal is the map view of the dashboard which will give the different map layers of the area of interest. You can visualize, compare and interpret the out of the different analysis done on the landscape area in the geoportal.

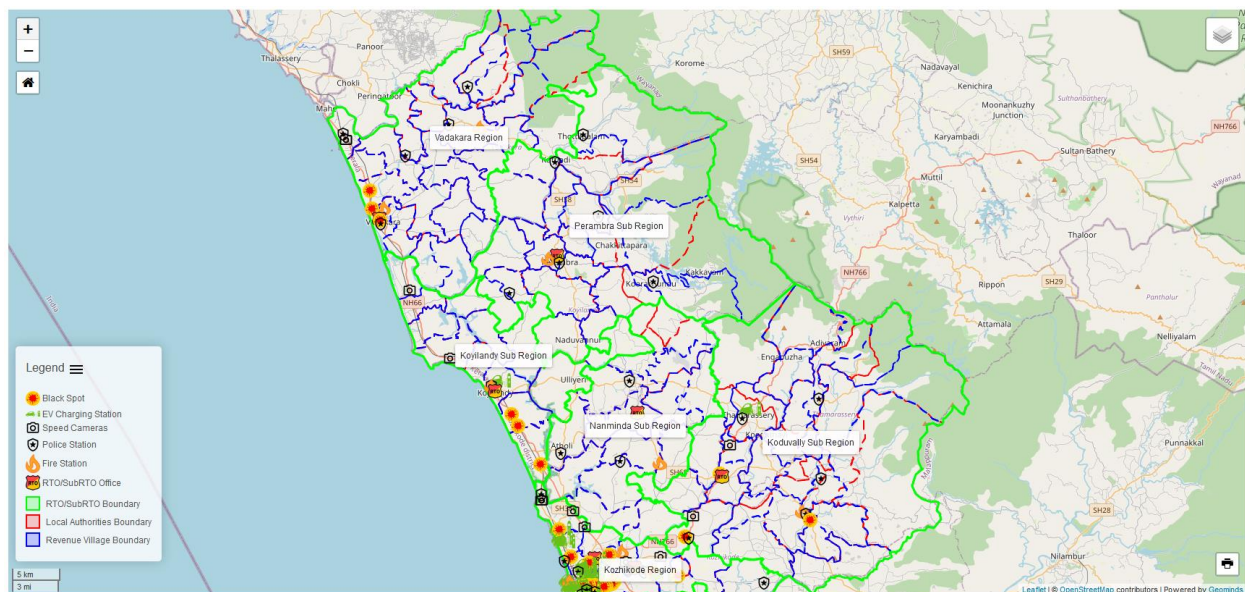



Figure 1: Safe Kozhikode Geoportal

1.1. Layer Panel

The Layer Panel is the place from where the user can select the different layers of maps. User can open



the layer panel by hovering the layer icon () on the top right of the geoportal. The panel can be closed by clicking anywhere outside the panel. User can select the layers by checking the boxes on the left of the respective layer names. Any number of layer can be selected as per the user requirement. Deselecting can be done by unchecking the same box.

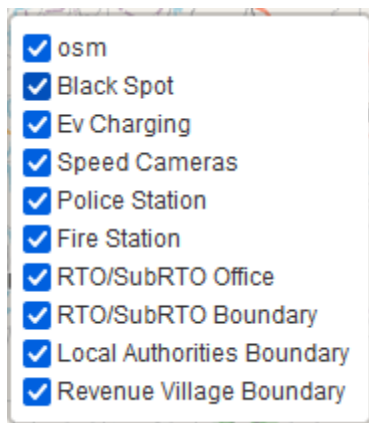


Figure 2: Layer panel

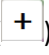


1.1.1. Base map

OpenStreetMap (OSM) is kept as a Base map for reference for other layers. It can be switched on and off as per requirement.


1.1.2. Layer order

Layer order can be adjusted as per user preference. The last clicked layer will be appeared as the top layer. If you need to bring any layer on top 'Off' (uncheck) the layer and 'On' check it again.

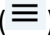
1.2. Zoom Bar

The zoom bar is provided at the top left of the geoportal with three buttons in it. The plus icon () helps in zooming in and minus icon () helps in zooming out. The third button below the zoom bar is called the recenter button () which will take to the whole extent view of the whole area. The zoom in and out can also be done using the mouse scrolls.

1.3. Print

The print button () is located on the right bottom of the geoportal. The print button saves the current view as an image in two different orientation A4 portrait and A4 landscape. Print works better in computer than in mobile view.

1.4. Legends

The legends for the active layers are visible on the left side of the geoportal. The unwanted legends can be switched off by the clicking on it. Legend can be collapsed by clicking the collapse icon () at the top of legend box, again clicking on the icon it will expand again.

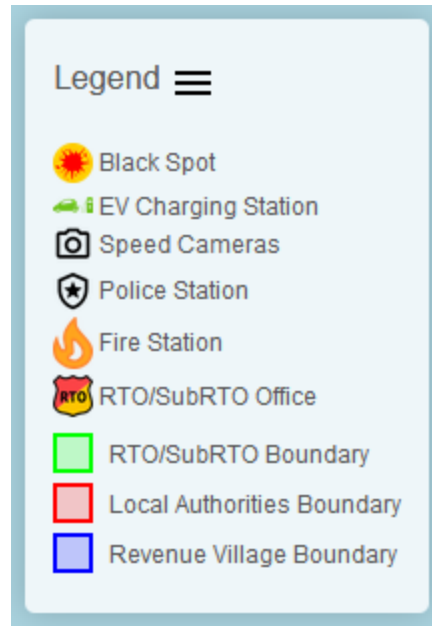


Figure 3: Legends of layes

1.5. Scale Bar

The scale bar is visible at the bottom left corner of the geoportal, which will be updated automatically in each the zoom levels.

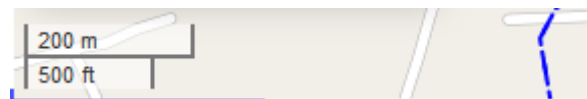


Figure 4: Scale bar

1.6. Credits and Attributions

The credit and attribution of data and codes used in the portal are provided at the bottom right corner of the window.

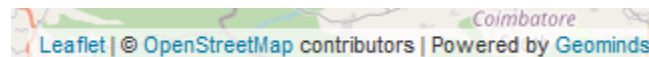


Figure 5: Data attributions and credits

1.7. OnClick Tooltip

OnClick Tooltip is a feature available in the geoportal. While clicking on the layer the details of those layers saved as attributes are visible on the popup. This popup can be closed by clicking the close button on it.

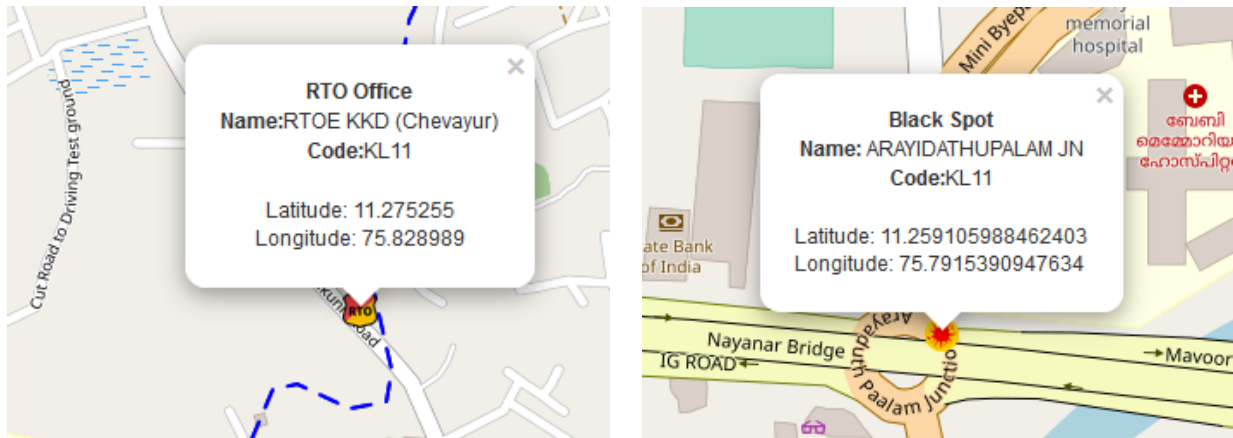


Figure 6:OnClick Tooltip popup of some layers.

2. About

About page contains the information about the project.

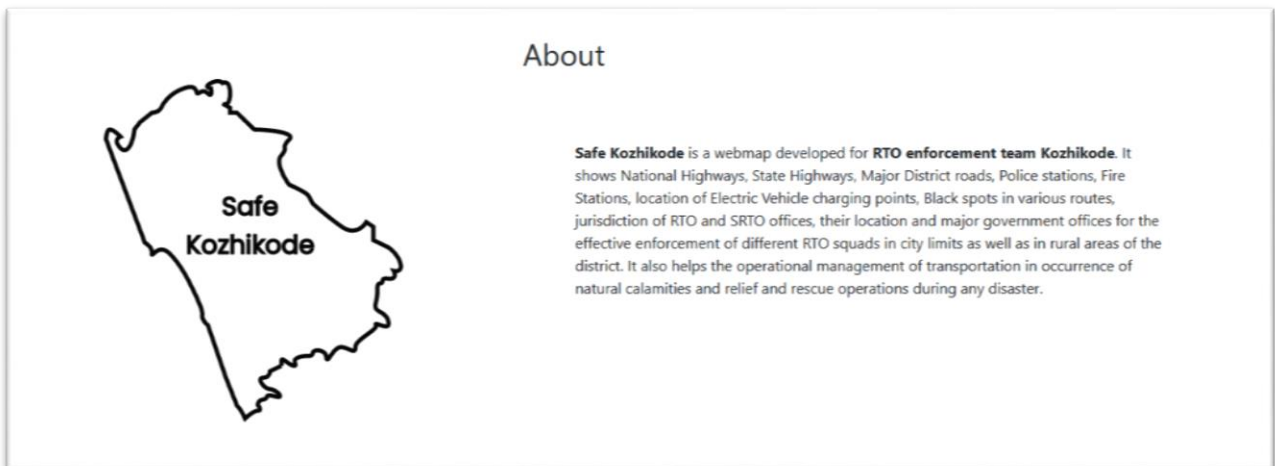


Figure 7: About Page

3. User Manual

A detailed instructions on the features of the portal is explained in the user manual and it can be viewed and downloaded by clicking on the button below the map ([See User Manual](#)) or from the top navigation bar.